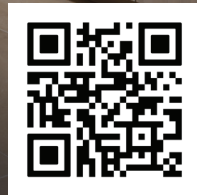




We're Here to Rebuild for You



Scan to Learn More

Brookfield Residential Rebuild is a full-service rebuilding initiative. Drawing on Brookfield Residential's 70 years of homebuilding experience, we help homeowners in Altadena and Pacific Palisades bring their homes—and their communities—back to life.



Transparent Pricing & Timeline

Upfront, all-inclusive pricing for your home, with a clear timeline from pre-development to move-in—no surprises along the way.



Pre-Approved Floorplans

Choose from a range of flexible floorplans designed specifically for Altadena and Pacific Palisades—all ready for permitting and tailored to your lot.



Full-Service Construction Management

We handle everything from lot preparation and permitting to design personalization and construction, coordinating every step for quality and efficiency.



Fire Resiliency

Every home is built to IBHS Wildfire Prepared Plus standards, incorporating proven design features that help reduce wildfire risk.



Comprehensive Home Warranty

Peace of mind working with an experienced and trusted homebuilder for years to come with a one-year fit & finish warranty and a 10-year structural warranty.



(855) 768-7578 | [BrookfieldResidentialRebuild.com](https://www.BrookfieldResidentialRebuild.com)

© 2026 Brookfield Residential. All rights reserved. Information subject to change. Contractors License #1061431 Brookfield Social Builders, LLC.



PALISADES, HAYDEN PLAN



PALISADES, DAWN PLAN



PALISADES, TAPESTRY PLAN



PALISADES, WATERSTONE PLAN

Our Full-Service Rebuild Support

We handle the construction of your new home from start to finish, including:

- Lot preparation and land development
- Home construction and architectural design
- Permitting and approvals from local agencies
- Personalization options through our Design Studio
- Included and owned solar system with powerwall design
- Front yard landscaping at move-in



(855) 768-7578 | [BrookfieldResidentialRebuild.com](https://www.BrookfieldResidentialRebuild.com)

© 2026 Brookfield Residential. All rights reserved. Information subject to change. Contractors License #1061431 Brookfield Social Builders, LLC.

PALISADES FLOORPLANS



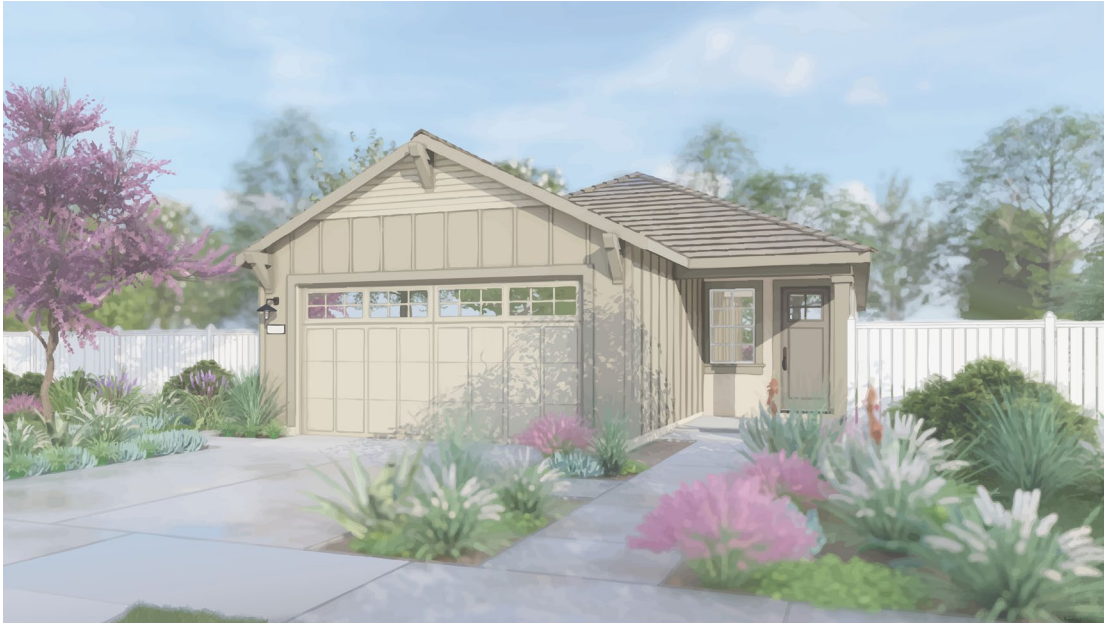
Brookfield
Residential



BrookfieldResidentialRebuild.com
(855) 768-7578

ASHER PLAN

Approx. 1,795 Sq. Ft. • Single Story • 3 – 4 Bedrooms • 2 Baths • 2-Car Garage



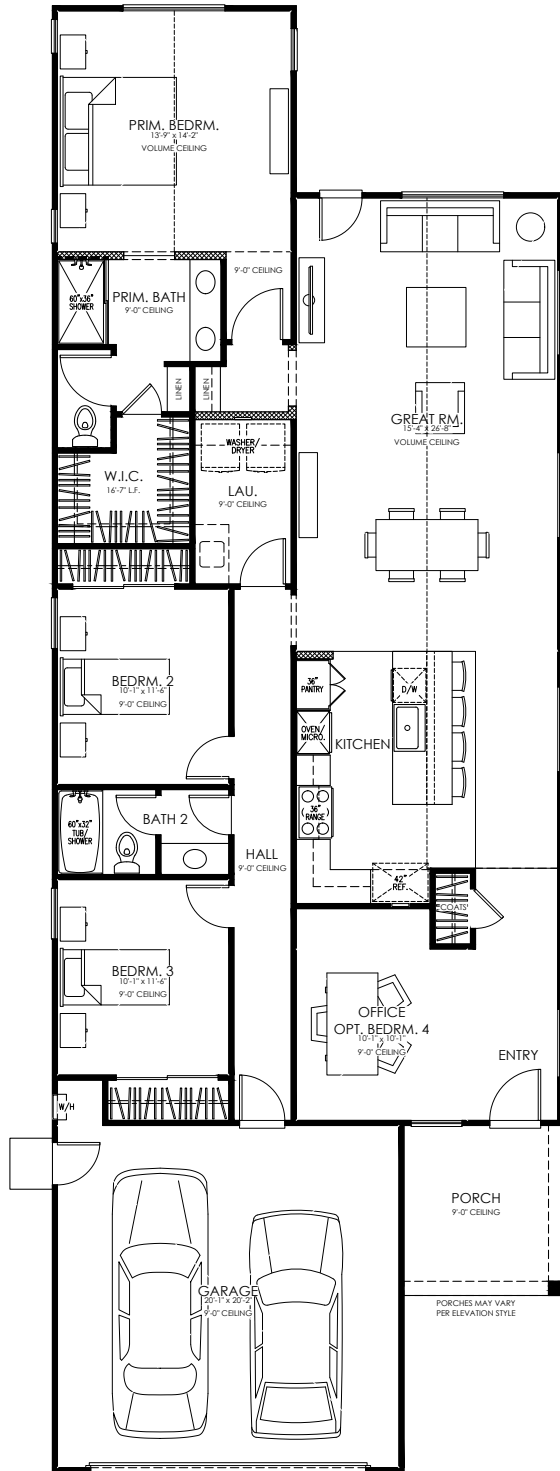
FARMHOUSE



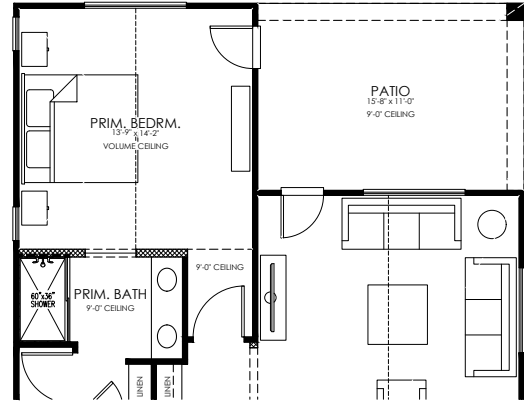
COASTAL

ASHER PLAN

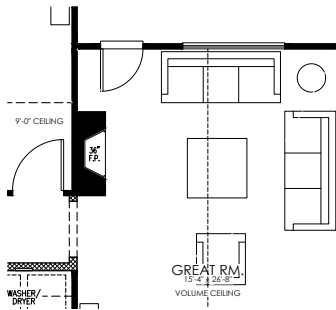
Approx. 1,795 Sq. Ft. • Single Story • 3 – 4 Bedrooms • 2 Baths • 2-Car Garage



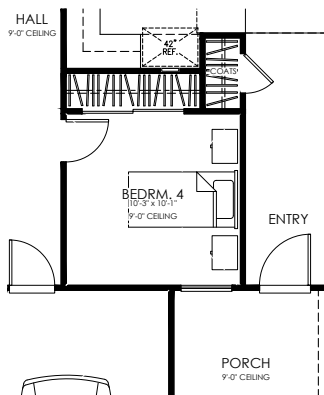
FIRST FLOOR



OPTIONAL PATIO



OPTIONAL FIREPLACE



OPTIONAL BEDROOM 4

HAYDEN PLAN

Approx. 2,499 Sq. Ft. • Two-Story • 4 Bedrooms • 3 Baths • 2-Car Garage



TRADITIONAL



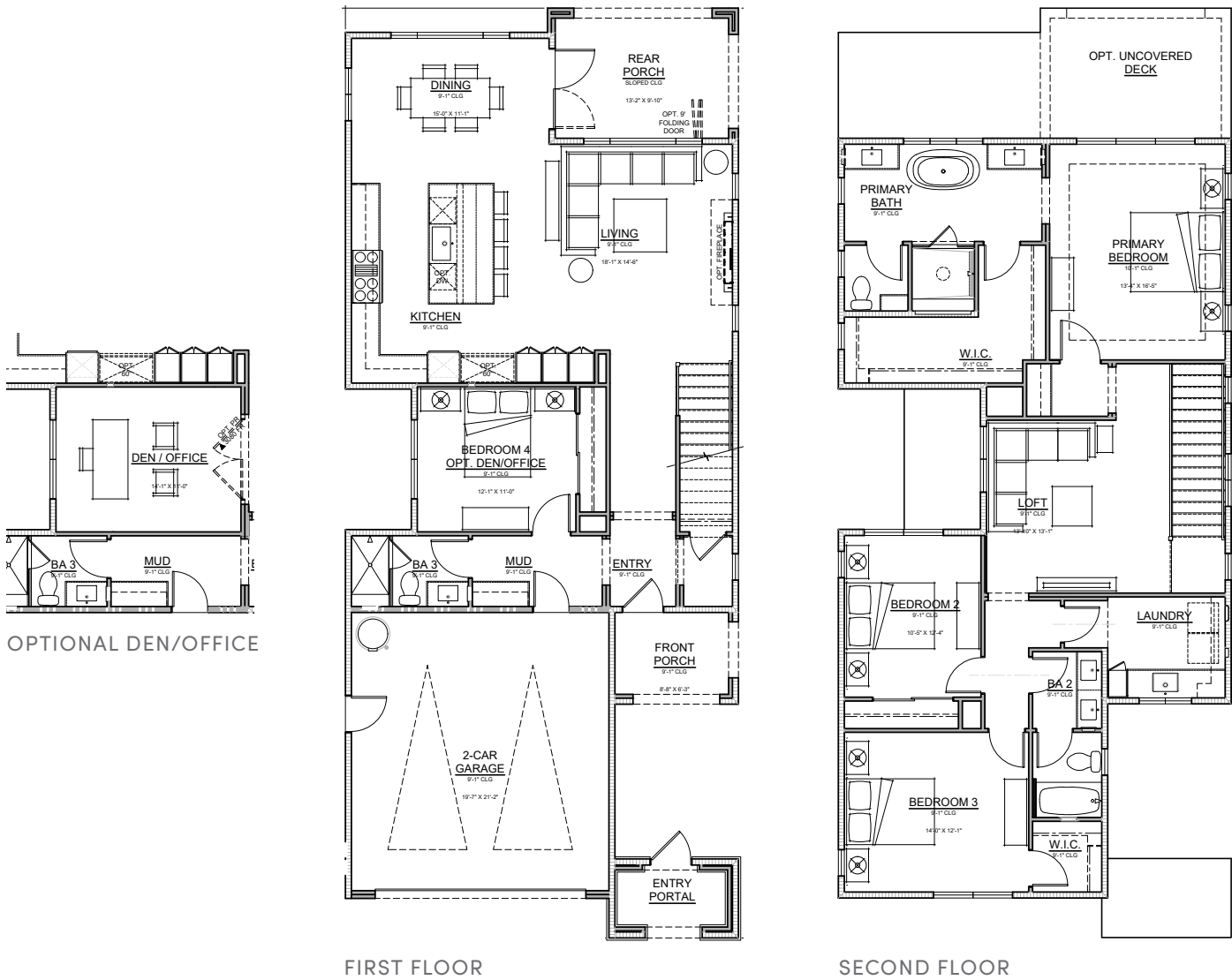
FARMHOUSE



COASTAL

HAYDEN PLAN

Approx. 2,499 Sq. Ft. • Two-Story • 4 Bedrooms • 3 Baths • 2-Car Garage



EVERLY PLAN

Approx. 1,923 Sq. Ft. • Single Story • 4 Bedrooms • 3 Baths • 2-Car Garage



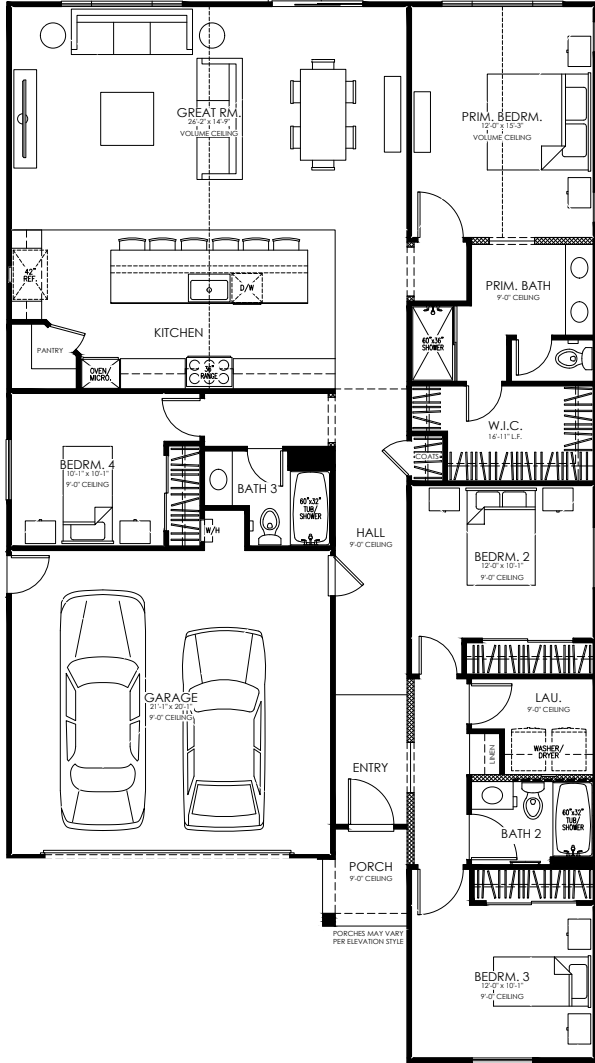
FARMHOUSE



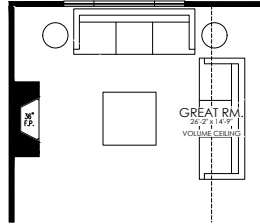
COASTAL

EVERLY PLAN

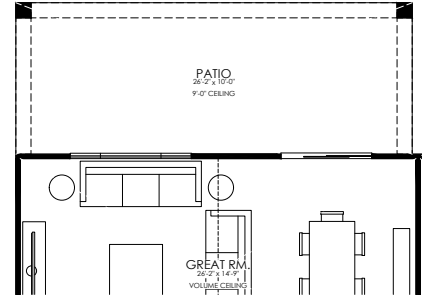
Approx. 1,923 Sq. Ft. • Single Story • 4 Bedrooms • 3 Baths • 2-Car Garage



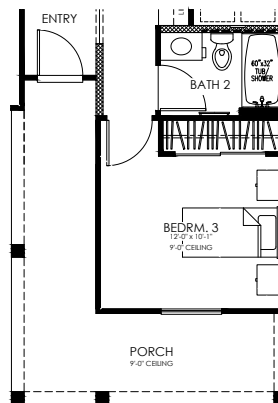
FIRST FLOOR



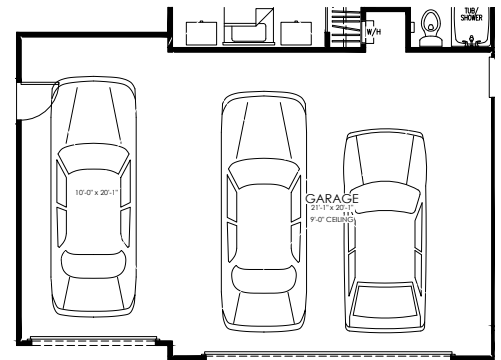
OPTIONAL FIREPLACE



OPTIONAL PATIO



OPTIONAL EXTENDED PORCH



OPTIONAL 3-CAR GARAGE

LILY PLAN

Approx. 2,126 Sq. Ft. • Single Story • 4-5 Bedrooms • 3 Baths • 2-Car Garage



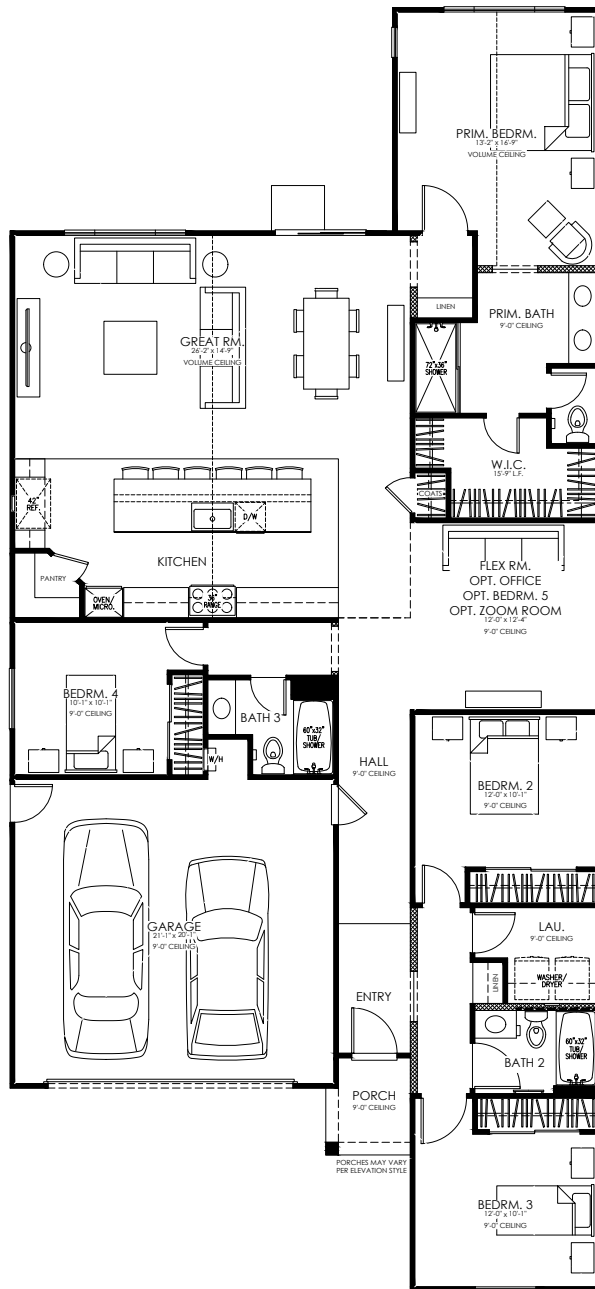
FARMHOUSE



COASTAL

LILY PLAN

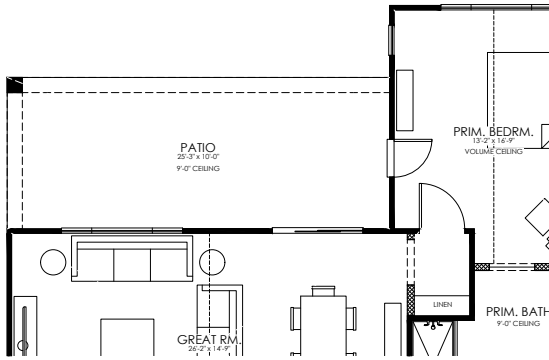
Approx. 2,126 Sq. Ft. • Single Story • 4-5 Bedrooms • 3 Baths • 2-Car Garage



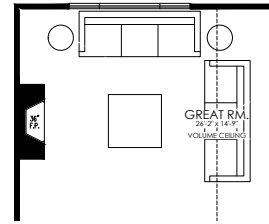
FIRST FLOOR

LILY PLAN

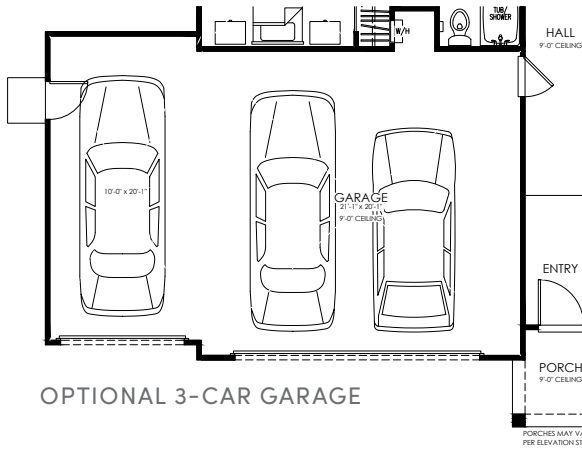
Approx. 2,126 Sq. Ft. • Single Story • 4-5 Bedrooms • 3 Baths • 2-Car Garage



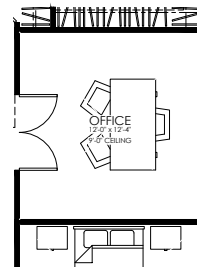
OPTIONAL PATIO



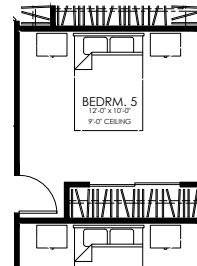
OPTIONAL FIREPLACE



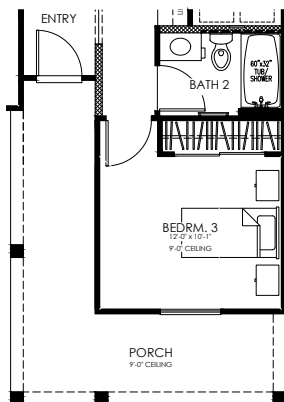
OPTIONAL 3-CAR GARAGE



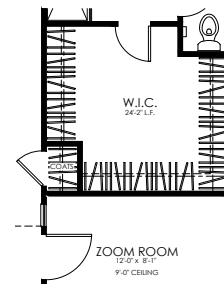
OPTIONAL OFFICE



OPTIONAL BEDROOM 5



OPTIONAL EXTENDED PORCH



OPTIONAL ZOOM ROOM

DAWN PLAN

Approx. 2,509 Sq. Ft. • Two-Story • 4 Bedrooms • 3 Baths • 2-Car Garage



TRADITIONAL



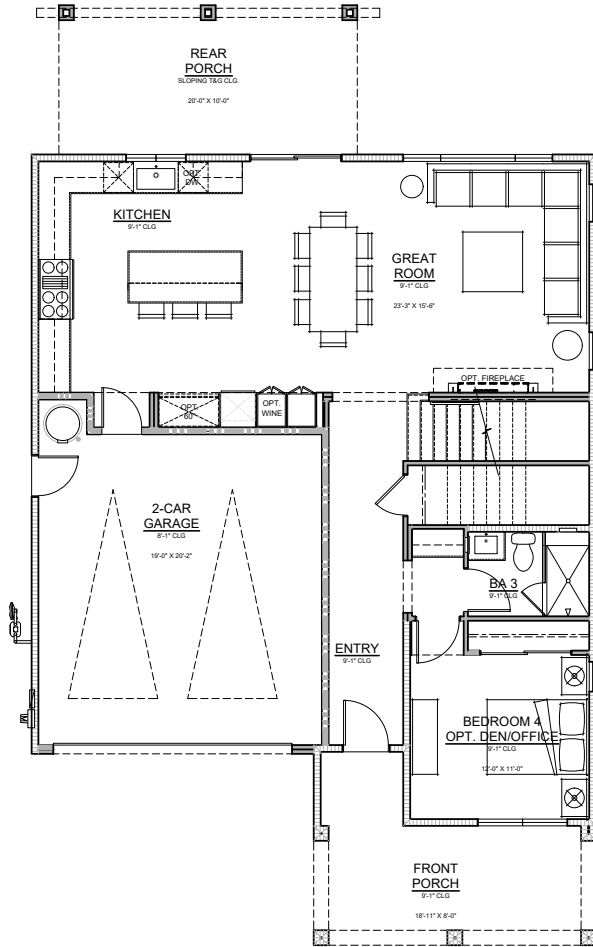
FARMHOUSE



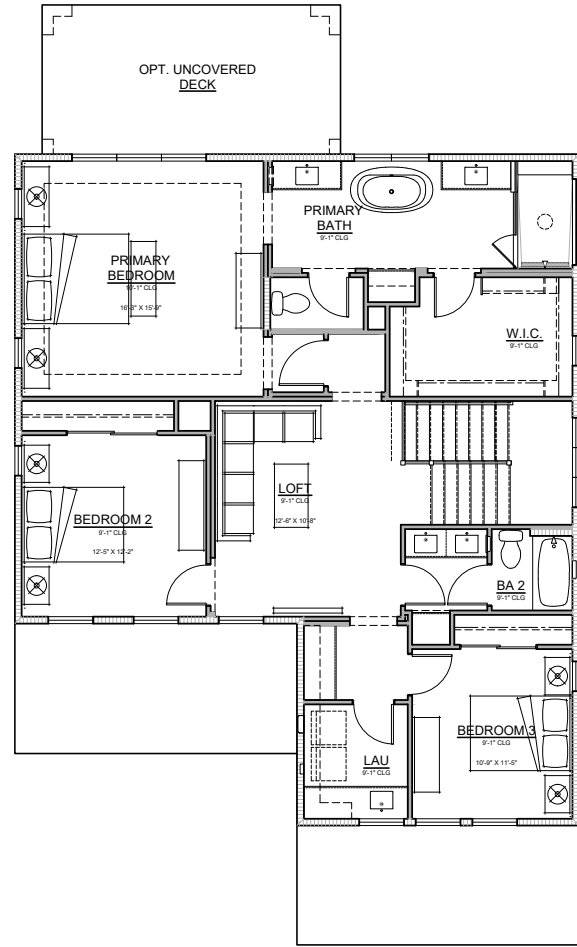
COASTAL

DAWN PLAN

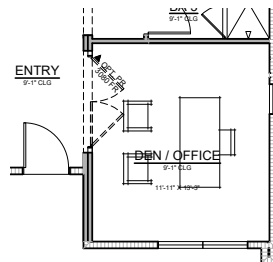
Approx. 2,509 Sq. Ft. • Two-Story • 4 Bedrooms • 3 Baths • 2-Car Garage



FIRST FLOOR



SECOND FLOOR



OPTIONAL DEN/OFFICE

SEAGLASS PLAN

Approx. 2,803 Sq. Ft. • Two-Story • 4-5 Bedrooms • 3 Baths • 2-Car Garage



TRADITIONAL



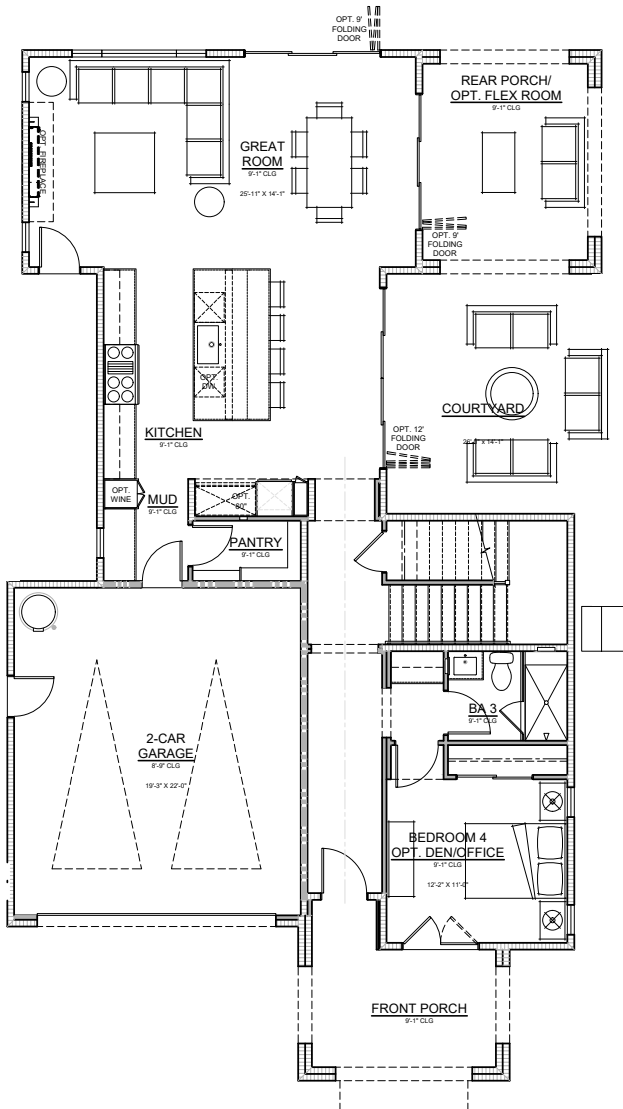
FARMHOUSE



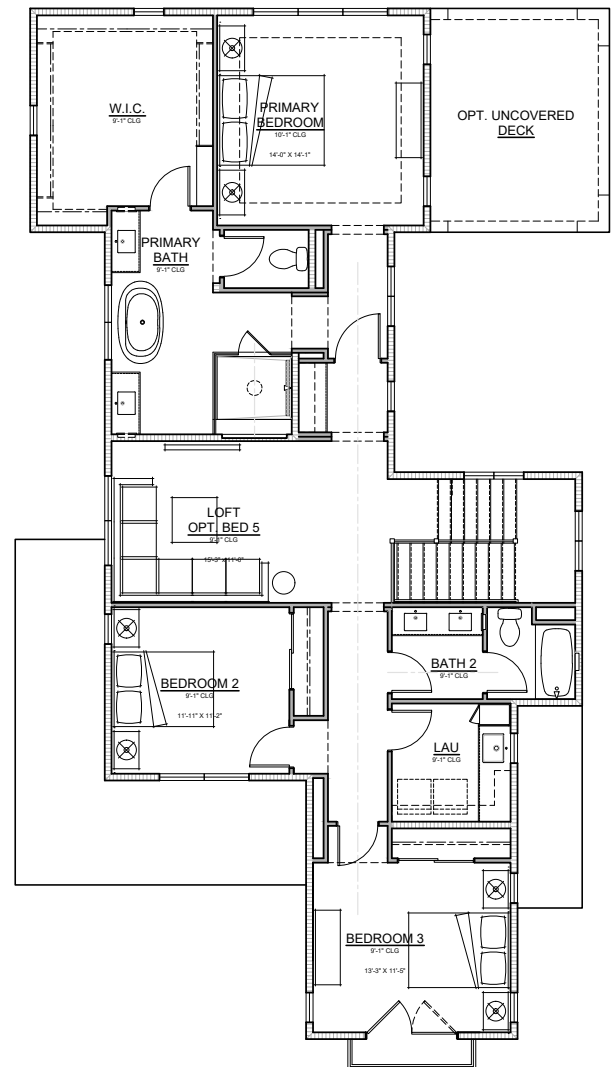
COASTAL

SEAGLASS PLAN

Approx. 2,803 Sq. Ft. • Two-Story • 4-5 Bedrooms • 3 Baths • 2-Car Garage



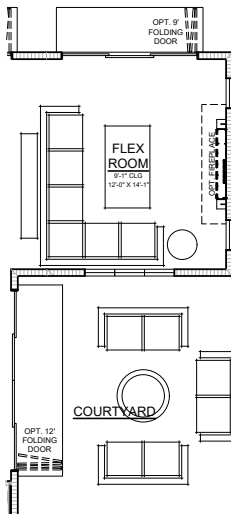
FIRST FLOOR



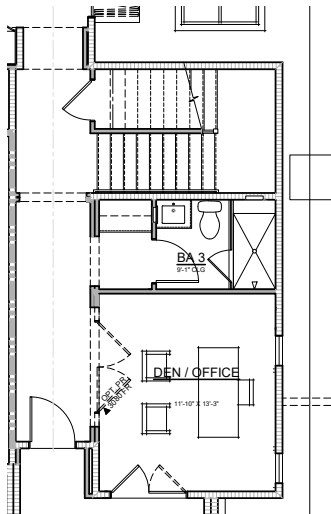
SECOND FLOOR

SEAGLASS PLAN

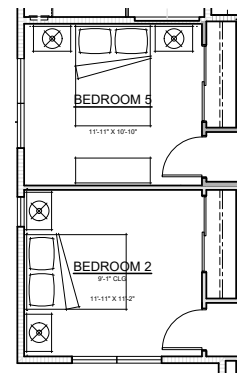
Approx. 2,803 Sq. Ft. • Two-Story • 4-5 Bedrooms • 3 Baths • 2-Car Garage



FIRST FLOOR
OPTIONAL FLEX ROOM



FIRST FLOOR
OPTIONAL DEN/OFFICE



SECOND FLOOR
OPTIONAL BEDROOM 5

TAPESTRY PLAN

Approx. 3,243 Sq. Ft. • Two-Story • 5 Bedrooms • 4.5 Baths • 2-Car Garage



TRADITIONAL



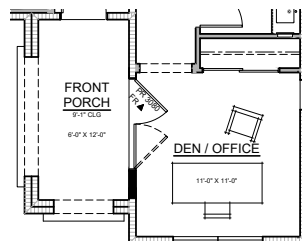
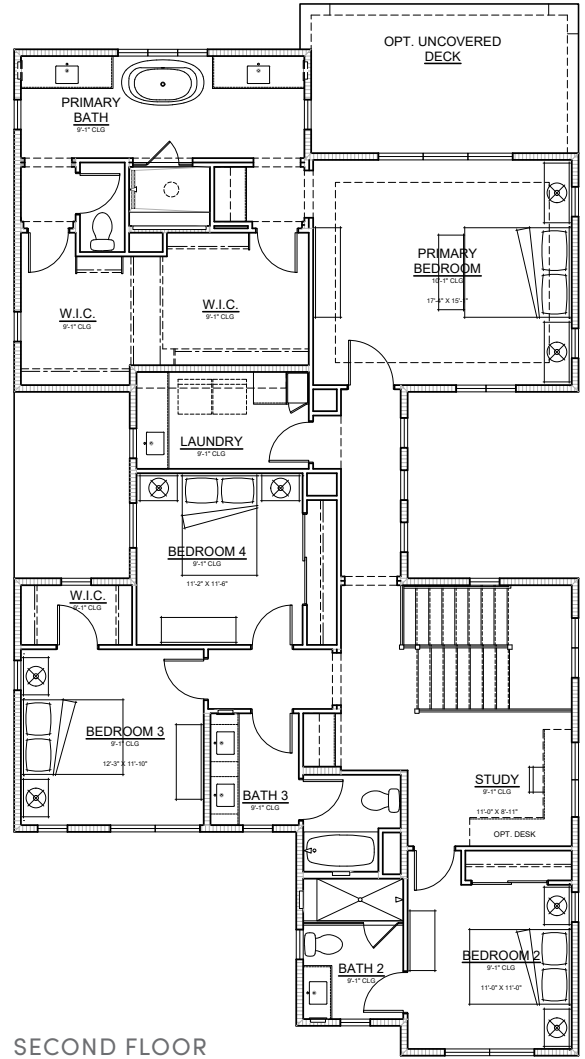
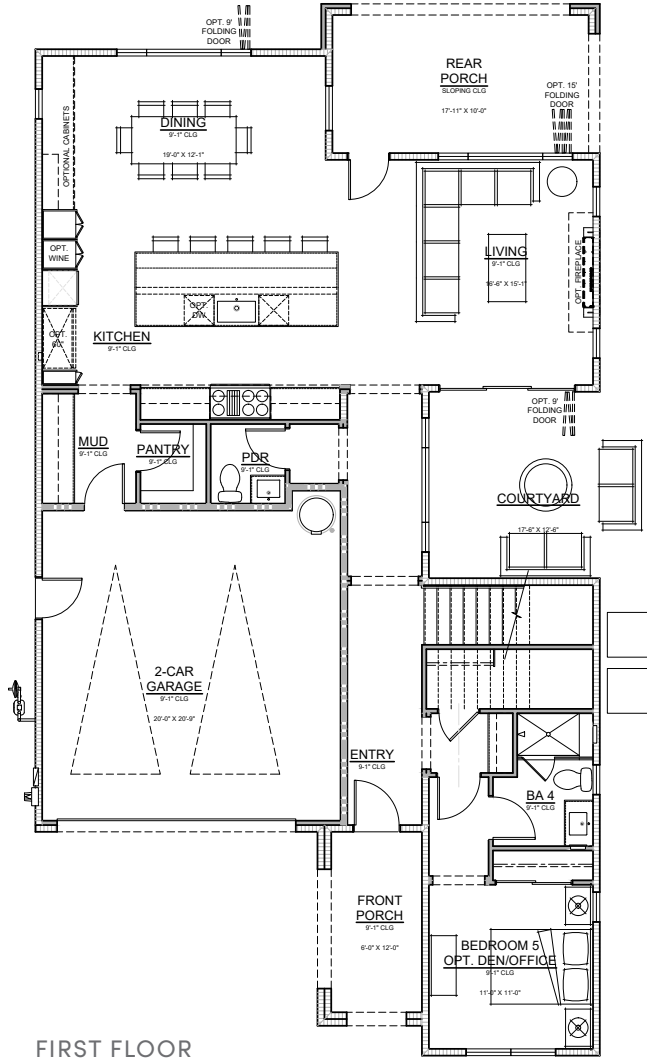
FARMHOUSE



COASTAL

TAPESTRY PLAN

Approx. 3,243 Sq. Ft. • Two-Story • 5 Bedrooms • 4.5 Baths • 2-Car Garage



WATERSTONE PLAN

Approx. 3,542 Sq. Ft. • Two-Story • 5 Bedrooms • 4.5 Baths • 2-Car Garage



TRADITIONAL



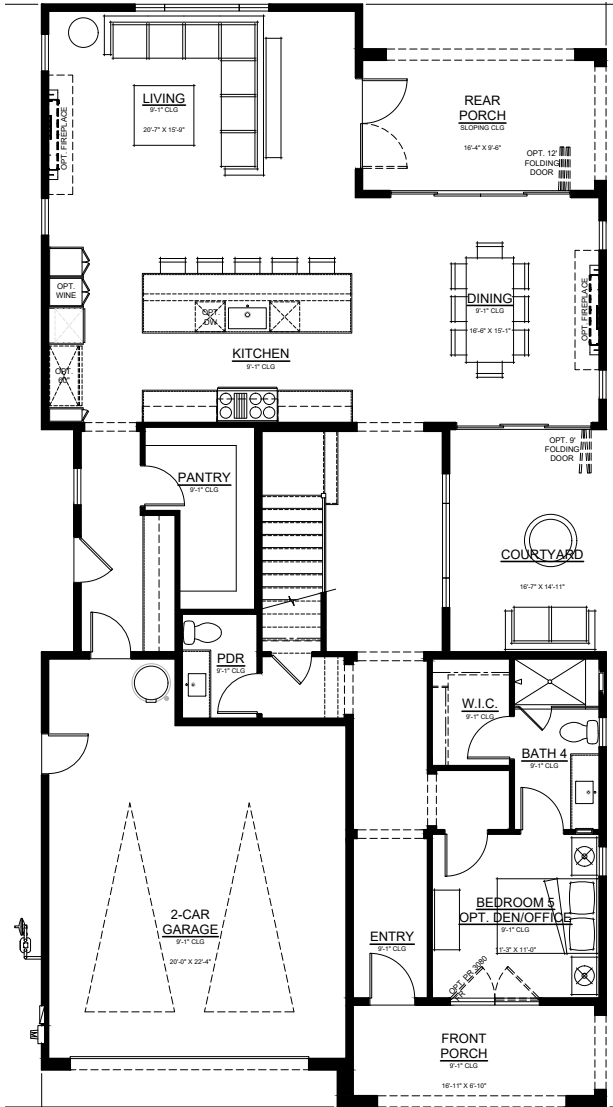
FARMHOUSE



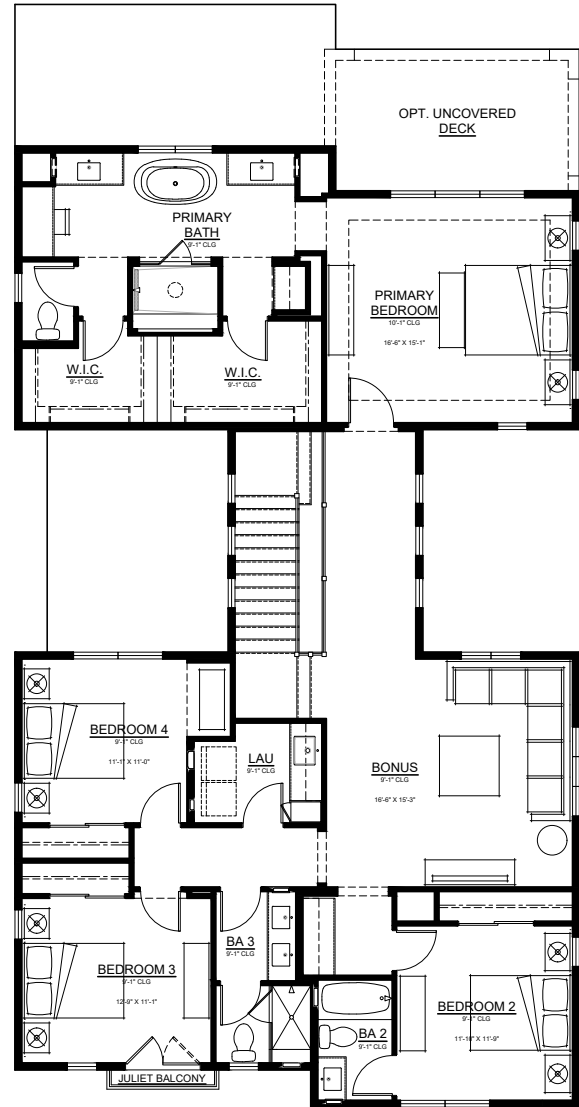
COASTAL

WATERSTONE PLAN

Approx. 3,542 Sq. Ft. • Two-Story • 5 Bedrooms • 4.5 Baths • 2-Car Garage



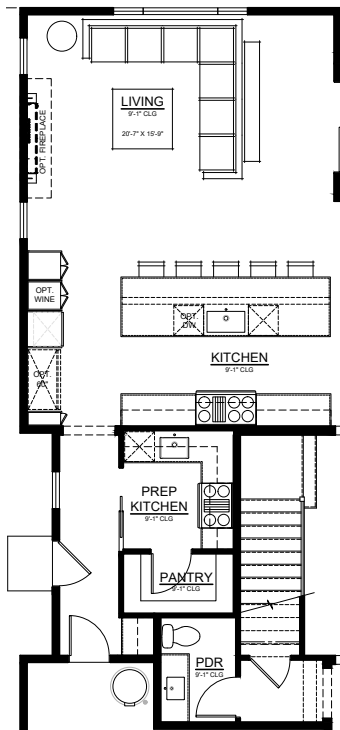
FIRST FLOOR



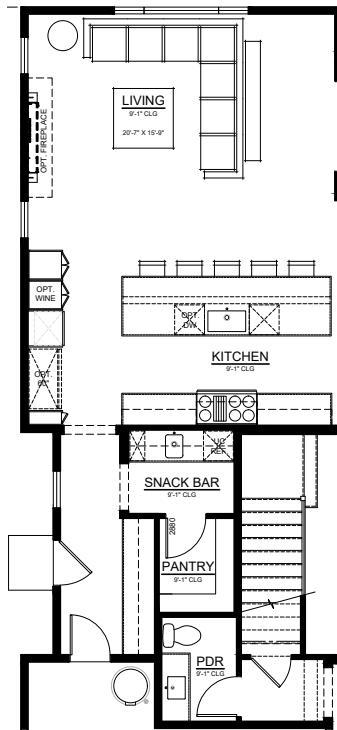
SECOND FLOOR

WATERSTONE PLAN

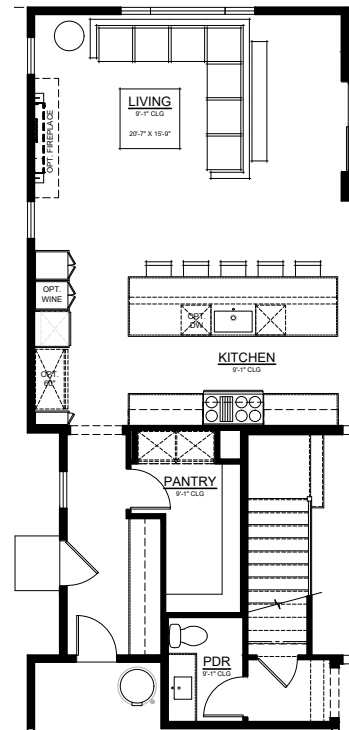
Approx. 3,542 Sq. Ft. • Two-Story • 5 Bedrooms • 4.5 Baths • 2-Car Garage



FIRST FLOOR
OPTIONAL PREP KITCHEN



FIRST FLOOR
OPTIONAL SNACK BAR



FIRST FLOOR
OPTIONAL SUPER PANTRY

Exceptional Exteriors

- Stylish architecture in Farmhouse, Traditional and Coastal styles
- Decorative exterior light fixtures that coordinate with architectural styles
- Inviting, low-maintenance 8' entry doors featuring Schlage Encode Plus™ Smart WiFi deadbolt in matte black
- Full-wrap, 6 ½" round rain gutters with leaf guards
- Fully drywalled garage with stylish Wayne Dalton carriage style sectional roll-up door and WiFi-enabled opener

Fire Resiliency

All Brookfield Residential Rebuild Homes are built to the IBHS Wildfire Prepared Plus Standards

- 5' "Zone 0" area around home
- Class A fire-rated roof
- Non-combustible covered gutters and downspouts
- Ember-resistant vents
- Non-combustible fencing within 5' of house
- Enclosed underside of eaves
- Metal dryer vent
- Non-combustible exterior wall surfaces
- Non-combustible decorative window shutters
- Fire-resistant windows
- Non-combustible exterior doors
- Non-combustible decks (where applicable)

Stylish Living Spaces

- Energy-efficient, surface-mounted LED disk lighting with rocker switches in select living areas
- J-box with dimmers in primary and secondary bedrooms
- Clean-lined square wall corners
- Modern door casings and elevated 7 ¼" baseboards throughout
- Sherwin-Williams® paint throughout
- Contemporary single-panel interior doors with matte black hardware
- Primary baths feature quartz countertops with 6" backsplash, Kohler® Verticyl® undermount sinks with Kohler® Castia™ widespread faucet, shower with tiled surround and Kohler® elongated toilet
- Secondary baths feature quartz countertops with 6" backsplash, Kohler® Verticyl® undermount sinks with Kohler® Castia™ widespread faucets, tub/shower with tiled surround, Kohler® elongated toilet and convenient medicine cabinet for extra storage
- Powder baths feature Kohler® Verticyl® sinks with Kohler®

Castia™ widespread faucets and Kohler® Kingston™ comfort-height elongated toilet

- Laundry space with Kohler® sink and faucet

Modern Kitchens

- Stainless steel Sub-Zero, Wolf and Cove® appliance package includes:
 - Wolf® gas range with 6 burners and oven (36" range on single-story plans, 48" range on two-story plans)
 - Wolf® 30" built-in Speed Oven
 - Cove® 24" dishwasher
 - Sub-Zero® 36" refrigerator built-in classic French door with internal dispenser (Asher, Everly and Lily Plans) or Sub-Zero® 48" refrigerator side-by-side with internal dispenser (Hayden, Dawn, Seaglass, Tapestry and Waterstone plans)
- European-style white shaker cabinetry, soft close and dovetail drawers, adjustable shelving, concealed hinges and brushed nickel pencil pull hardware
- 1 ½" mitered-edge quartz countertops with 6" backsplash
- Stainless steel single-basin Kohler® kitchen sink with Kohler® Crue® faucet in polished chrome finish with food waste disposal
- Convenient rollout trash & recycling cabinet with two bins

Energy Efficiency

- Win-Dor Low-E dual-glazed vinyl windows in black that provide solar control and visible light transmittance, resulting in utility cost savings with increased efficiency
- Central air conditioning and heating with programmable ecobee® smart thermostat, creates more balance and energy-conscious consumption
- WaterSense® faucets, low-flow elongated toilets and showerheads conserve water
- Energy-efficient tankless gas water heater
- Included solar (kW TBD) with 1 Tesla Powerwall 3 battery

Technology

- Schlage Encode Plus™ Smart WiFi deadbolt front door lock with illuminated touchscreen allows for keyless entry
- ecobee® smart thermostat
- WiFi-enabled garage door opener
- Wireless access points to optimize wireless coverage throughout the home
- Technology pre-wiring with multiple enhanced Cat 6 data wire to allow for phone lines and high-speed data connection
- Taexx built-in pest control system with an accessible port