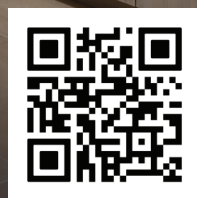




We're Here to Rebuild for You



Scan to Learn More

Brookfield Residential Rebuild is a full-service rebuilding initiative. Drawing on Brookfield Residential's 70 years of homebuilding experience, we help homeowners in Altadena and Pacific Palisades bring their homes—and their communities—back to life.



Transparent Pricing & Timeline

Upfront, all-inclusive pricing for your home, with a clear timeline from pre-development to move-in—no surprises along the way.



Pre-Approved Floorplans

Choose from a range of flexible floorplans designed specifically for Altadena and Pacific Palisades—all ready for permitting and tailored to your lot.



Full-Service Construction Management

We handle everything from lot preparation and permitting to design personalization and construction, coordinating every step for quality and efficiency.



Fire Resiliency

Every home is built to IBHS Wildfire Prepared Plus standards, incorporating proven design features that help reduce wildfire risk.



Comprehensive Home Warranty

Peace of mind working with an experienced and trusted homebuilder for years to come with a one-year fit & finish warranty and a 10-year structural warranty.



(855) 768-7578 | [BrookfieldResidentialRebuild.com](https://www.BrookfieldResidentialRebuild.com)

© 2026 Brookfield Residential. All rights reserved. Information subject to change. Contractors License #1061431 Brookfield Social Builders, LLC.



ALTADENA, SKYLAR PLAN



ALTADENA, DAISY PLAN



ALTADENA, LANTANA PLAN



ALTADENA, INDIGO PLAN

Our Full-Service Rebuild Support

We handle the construction of your new home from start to finish, including:

- Lot preparation and land development
- Home construction and architectural design
- Permitting and approvals from local agencies
- Personalization options through our Design Studio
- Included and owned solar system with powerwall design
- Front yard landscaping at move-in



(855) 768-7578 | [BrookfieldResidentialRebuild.com](https://www.BrookfieldResidentialRebuild.com)

© 2026 Brookfield Residential. All rights reserved. Information subject to change. Contractors License #1061431 Brookfield Social Builders, LLC.

ALTADENA FLOORPLANS



Brookfield
Residential



BrookfieldResidentialRebuild.com
(855) 768-7578

INDIGO PLAN

Approx. 1,795 Sq. Ft. • Single Story • 3 – 4 Bedrooms • 2 Baths • 2-Car Garage



SPANISH



TRADITIONAL



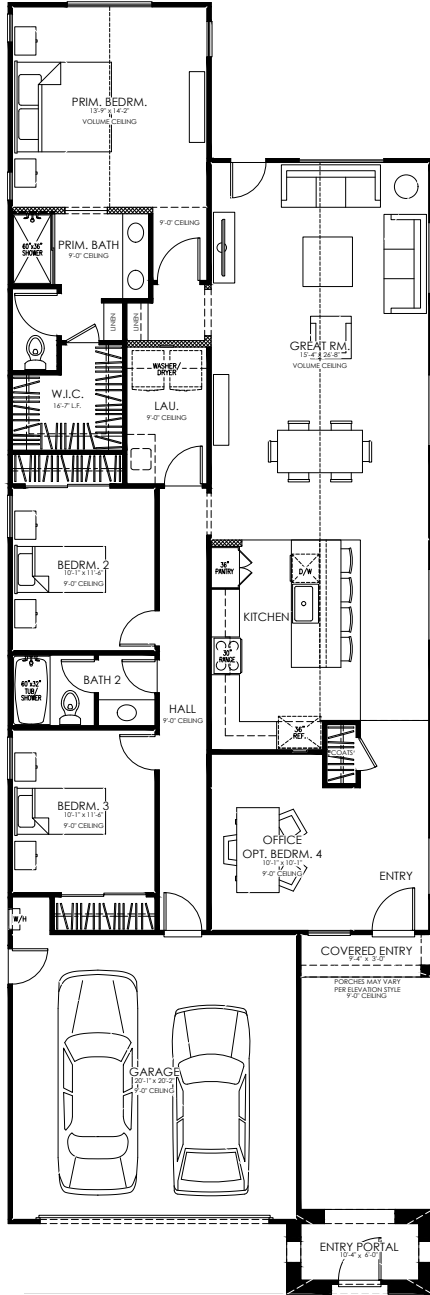
BUNGALOW



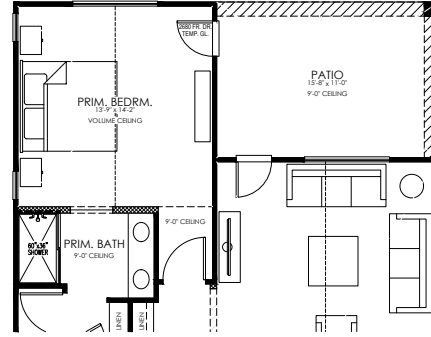
COTTAGE

INDIGO PLAN

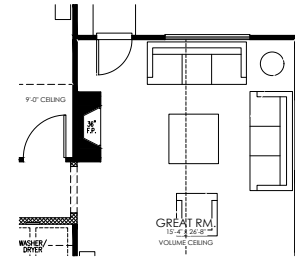
Approx. 1,795 Sq. Ft. • Single Story • 3 – 4 Bedrooms • 2 Baths • 2-Car Garage



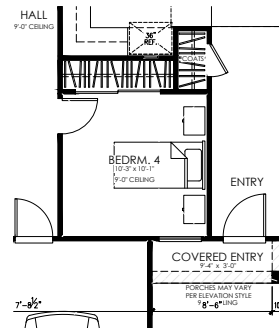
FIRST FLOOR



OPTIONAL PATIO



OPTIONAL FIREPLACE



OPTIONAL BEDROOM 4

DAISY PLAN

Approx. 1,563 Sq. Ft. • Single Story • 3 Bedrooms • 2 Baths • 2-Car Garage



SPANISH



TRADITIONAL



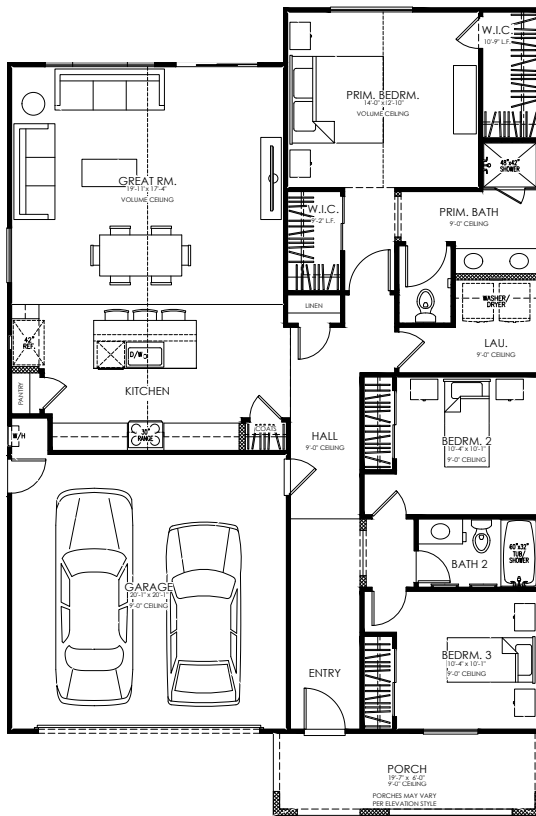
BUNGALOW



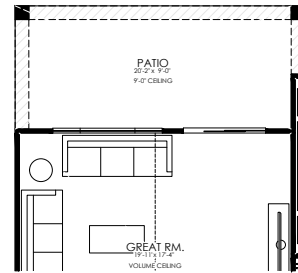
COTTAGE

DAISY PLAN

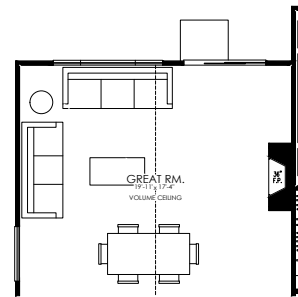
Approx. 1,563 Sq. Ft. • Single Story • 3 Bedrooms • 2 Baths • 2-Car Garage



FIRST FLOOR



OPTIONAL PATIO



OPTIONAL FIREPLACE

LANTANA PLAN

Approx. 1,738 Sq. Ft. • Single Story • 4 Bedrooms • 2 Baths • 2-Car Garage



SPANISH



TRADITIONAL



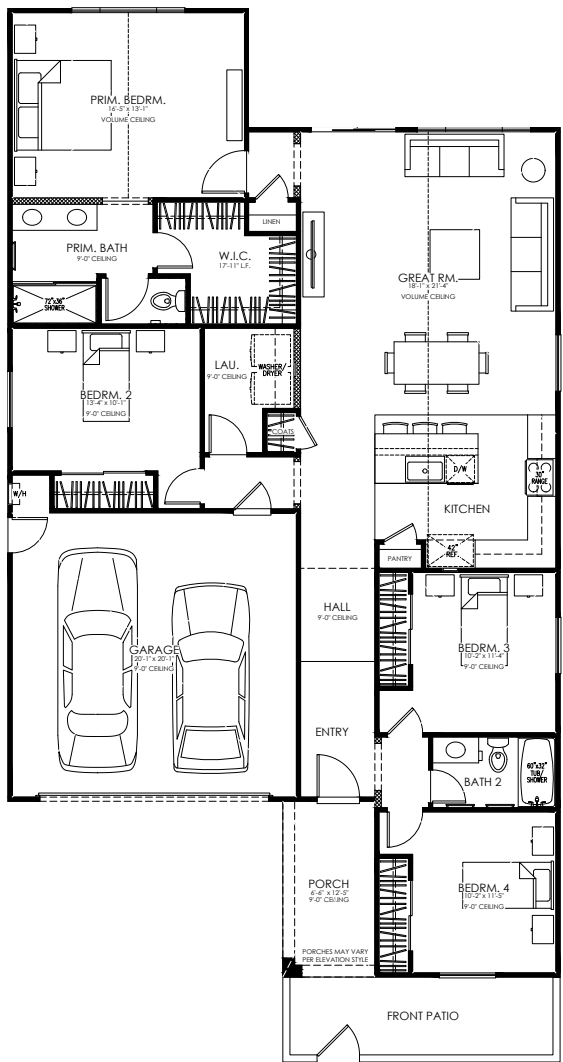
BUNGALOW



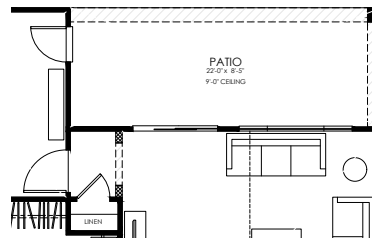
COTTAGE

LANTANA PLAN

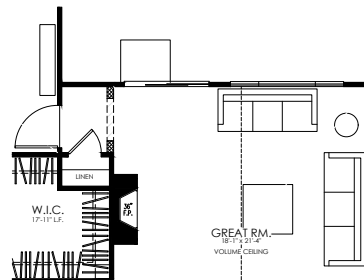
Approx. 1,739 Sq. Ft. • Single Story • 4 Bedrooms • 2 Baths • 2-Car Garage



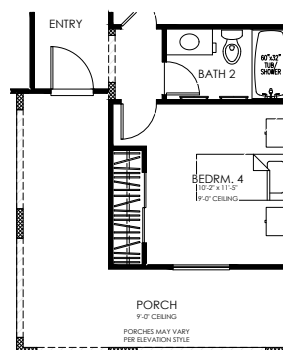
FIRST FLOOR



OPTIONAL PATIO



OPTIONAL FIREPLACE



OPTIONAL EXTENDED PORCH

SKYLAR PLAN

Approx. 1,933 Sq. Ft. • Single Story • 4 Bedrooms • 3 Baths • 2-Car Garage



SPANISH



TRADITIONAL



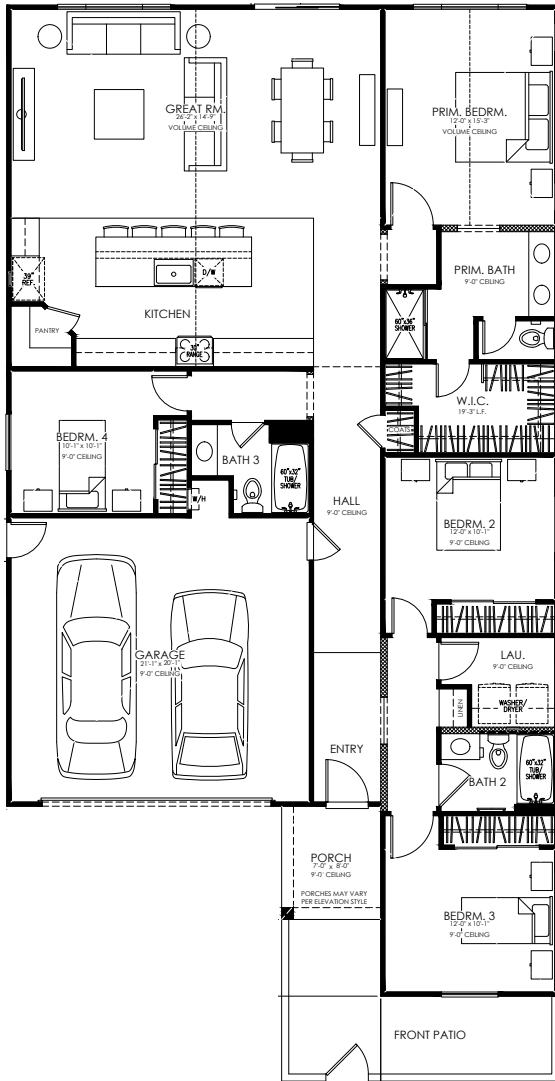
BUNGALOW



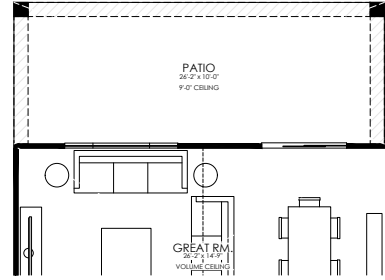
COTTAGE

SKYLAR PLAN

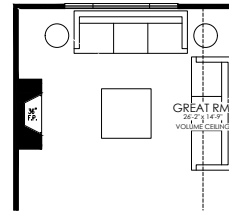
Approx. 1,933 Sq. Ft. • Single Story • 4 Bedrooms • 3 Baths • 2-Car Garage



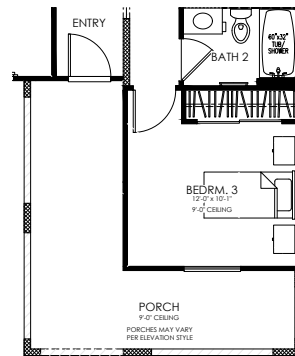
FIRST FLOOR



OPTIONAL PATIO



OPTIONAL FIREPLACE



OPTIONAL EXTENDED PORCH

SUNFLOWER PLAN

Approx. 2,136 Sq. Ft. • Single Story • 4–5 Bedrooms • 3 Baths • 2-Car Garage



SPANISH



TRADITIONAL



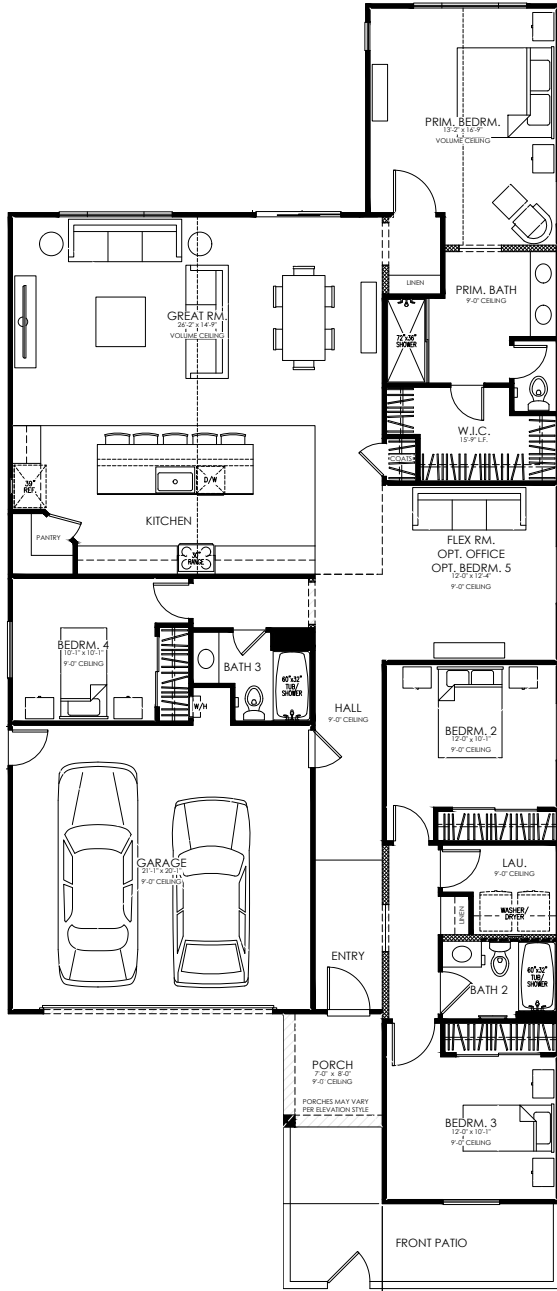
BUNGALOW



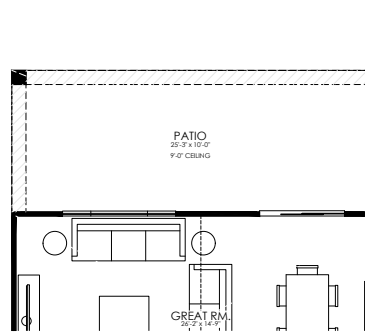
COTTAGE

SUNFLOWER PLAN

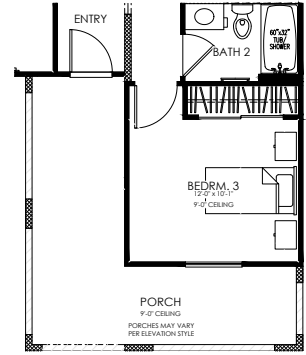
Approx. 2,136 Sq. Ft. • Single Story • 4 Bedrooms • 3 Baths • 2-Car Garage



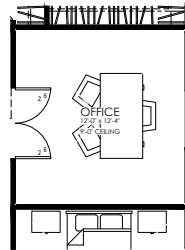
FIRST FLOOR



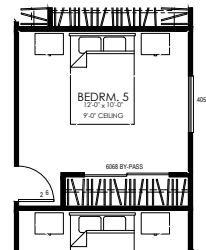
OPTIONAL PATIO



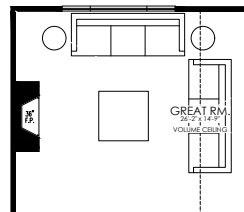
OPTIONAL EXTENDED PORCH



OPTIONAL OFFICE



OPTIONAL BEDROOM 5



OPTIONAL FIREPLACE

Exceptional Exteriors

- Stylish architecture in Bungalow, Cottage, Spanish and Traditional s
- Decorative exterior light fixtures and address signs that coordinate with architecture styles
- Inviting, low-maintenance 8' entry doors featuring Schlage Encode Plus™ Smart WiFi Deadbolt in matte black
- 5" pre-finished seamless aluminum rain gutters with leafguards and downspouts at select locations
- Fully drywalled garage with stylish sectional roll-up door and WiFi-enabled opener

Fire Resiliency

All Brookfield Residential Rebuild Homes are built to the IBHS Wildfire Prepared Plus Standards:

- 5' "Zone 0" area around home
- Class A fire-rated roof
- Non-combustible covered gutters and downspouts
- Ember-resistant vents
- Non-combustible fencing within 5' of house
- Enclosed underside of eaves
- Metal dryer vent
- Non-combustible exterior wall surfaces
- Non-combustible decorative window shutters
- Fire-resistant windows
- Non-combustible exterior doors

Stylish Living Spaces

- Energy-efficient, surface-mounted LED disk lighting with rocker switches in select living areas
- J-box with dimmers in great rooms, primary and secondary bedrooms
- Decorative door casings and elevated 2¼" baseboards throughout
- Sherwin-Williams® paint throughout
- Contemporary two-panel interior doors with oil-rubbed bronze hardware
- Primary baths feature thin-quartz square-edge countertops in one color with 6" backsplash, oval undermount sinks with Delta® Woodhurst® single-post polished chrome faucets, fiberglass shower with simulated subway tile surround, elongated toilet and convenient medicine cabinet for extra storage
- Secondary baths feature thin-quartz square-edge countertops in one color with 6" backsplash, oval undermount sinks with Delta® Woodhurst® single-post polished chrome faucets, fiberglass shower with simulated subway tile surround and elongated toilet

- Powder baths feature pedestal sinks with Delta® Woodhurst® single-post polished chrome faucets
- Laundry space with Whirlpool® front-load washer/dryer with pedestal

Modern Kitchens

- Stainless steel Whirlpool® appliance package includes:
 - 30" gas range with built-in backsplash, 4 burners and oven
 - 36" freestanding SXS refrigerator
 - 30" built-in microwave/hood over range
 - 24" multi-cycle dishwasher
- European white thermofoil cabinetry with raised-panel doors, adjustable shelving, concealed hinges and brushed nickel pencil-pull hardware
- 1½" mitered-edge granite countertops with 6" backsplash available in two colors
- Stainless steel double-basin kitchen sink with Delta® Nicoli™ single-handle pull-out faucet in polished chrome finish with food waste disposal
- Convenient roll-out trash & recycling cabinet with two bins

Energy Efficiency

- Low-E dual-glazed vinyl windows in white that provide solar control and visible light transmittance, resulting in utility cost savings with increased efficiency
- Central air conditioning and heating with programmable Honeywell® Lyric™ T6 smart thermostat, creates more balance and energy-conscious consumption
- WaterSense® faucets, low-flow elongated toilets and showerheads conserve water
- Energy-efficient tankless gas water heater
- Included solar (kW TBD) with 1 Tesla Powerwall 3 battery

Technology

- Schlage Encode Plus™ Smart WiFi Deadbolt front door lock with illuminated touchscreen allows for keyless entry
- Honeywell® Lyric™ T6 smart thermostat
- WiFi-enabled garage door opener
- Wireless access points to optimize wireless coverage throughout the home
- Technology pre-wiring with multiple enhanced Cat 6 data wire to allow for phone lines and high-speed data connection
- Taexx built-in pest control system with an accessible port